



# NEW REPAIR & SYSTEM TEST CAPABILITY

## Toyopuc PLC Product Capabilities

### Technical Bulletin

K+S has complete testing and repair capabilities of the Toyopuc- PC1/2/3 series of programmable controllers. Test routines have been written, and are fully exercised to test each and every function possible on the various modules. Many of the modules are complementary to several of K+S's robots. This live dynamic testing ensures a positive repair outcome. In many places where production process control is required, the Toyopuc with its five types of LAN (local area network) is probably behind the scenes.

#### Various Toyopuc Modules:

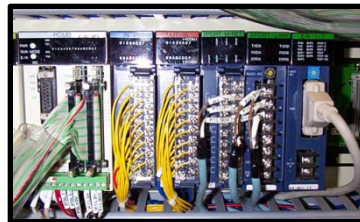
IN-12 Input	THK-2750
OUT-18 Output	THK-2753
2 Port M-Net	THU-5093
2 Port PC Link	THU-2927
Ethernet	THU-5296
Power Module	THV-2748
F2 I/O unit	TFU2586
Ma1ka-c Motion Control Module	
128 URT 2	



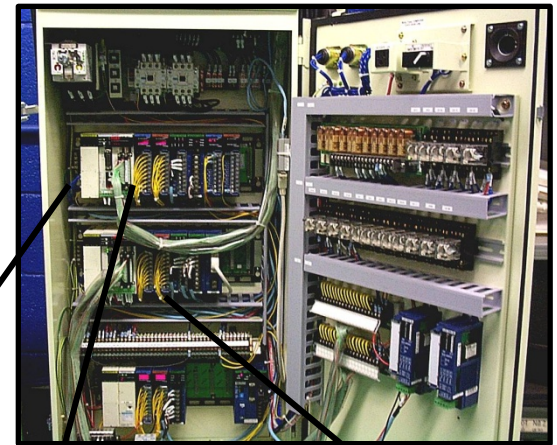
IDEC Monitor  
Touchscreen Control  
Panel



PC1 TPC-2060 with  
Integrated I/O  
Monitor Panel



(Expanded view of PC3JD)



PC3JD...TIC-5642 Processor

PC2J.....THC-2764 Processor

**12 Month In-Service Warranty**

**All Units Are System Tested**

**No Charge Evaluation**